

Model B

HET CLUSTER



totaal volume: 9570m²

119 woningen

37x 60m²

82x 70m²

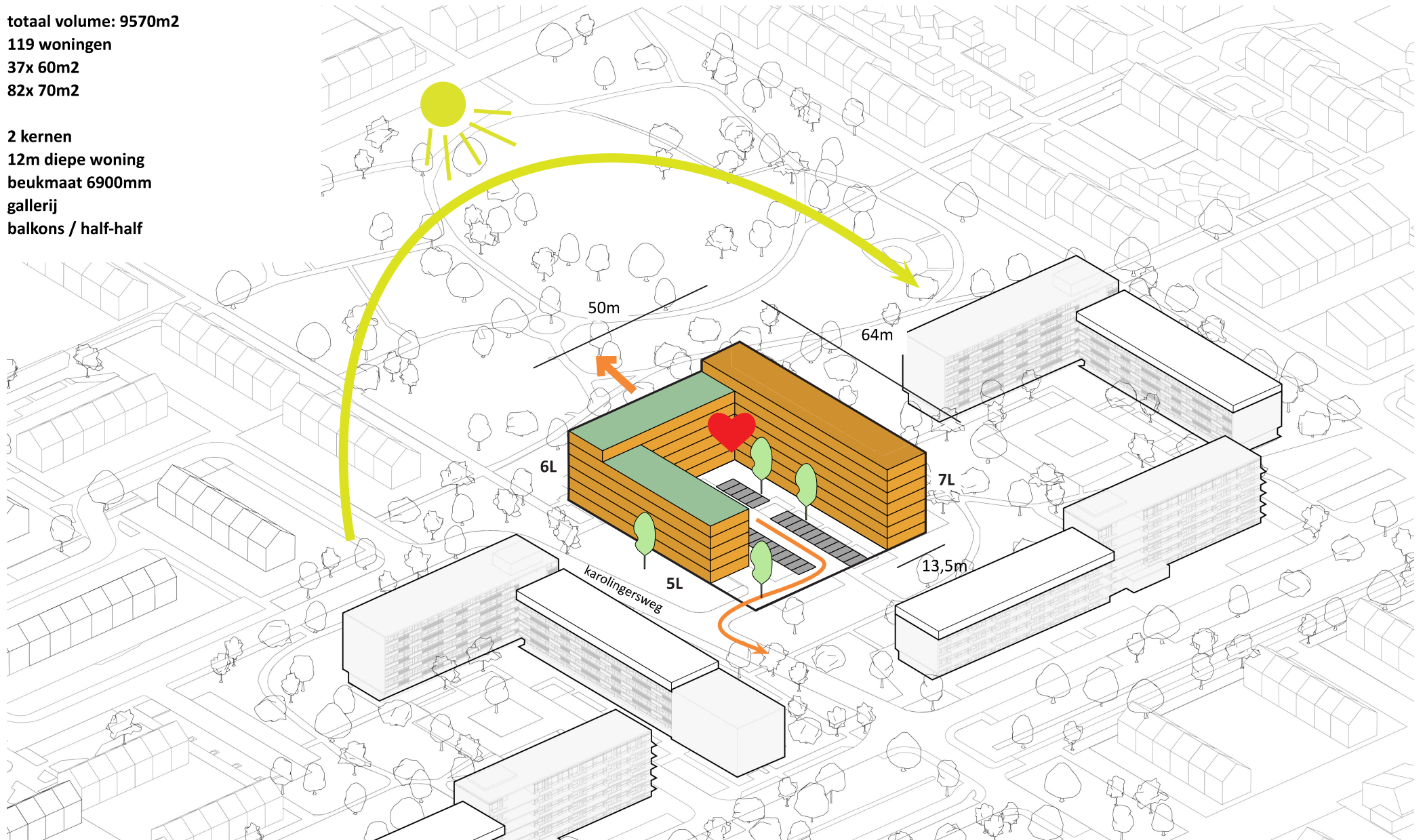
2 kernen

12m diepe woning

beukmaat 6900mm

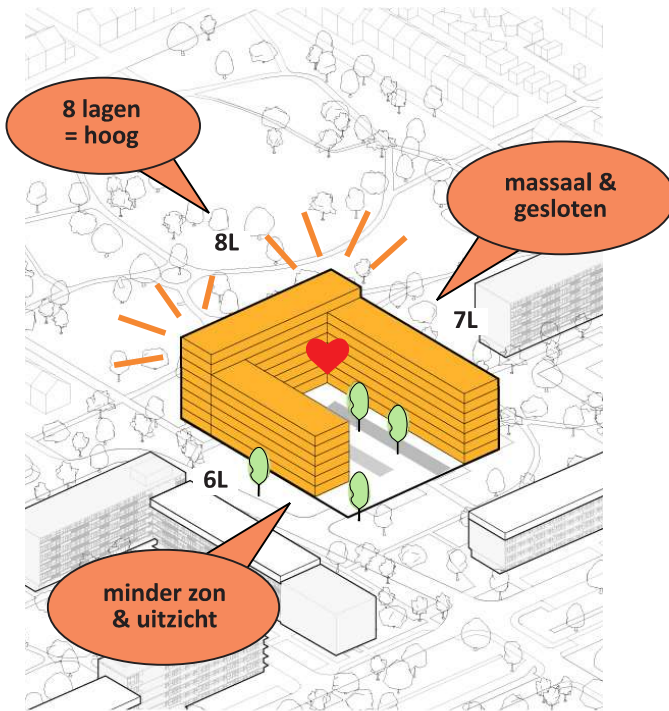
gallerij

balkons / half-half

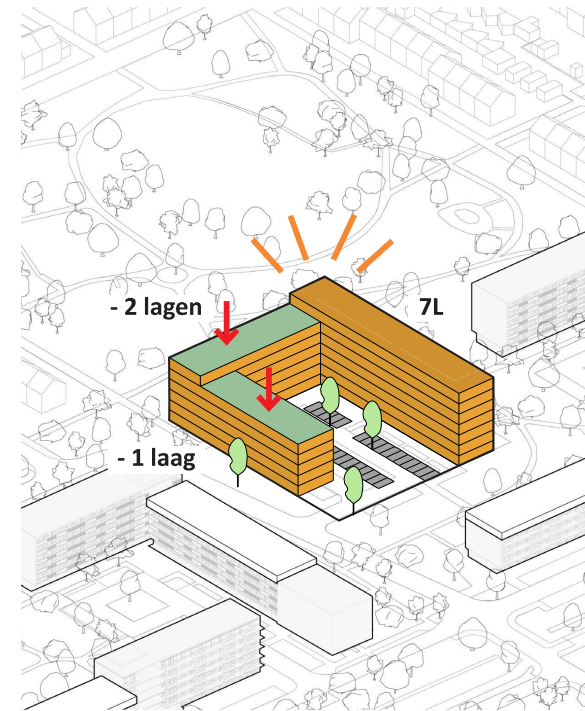


Model B - doorwerking

HET CLUSTER



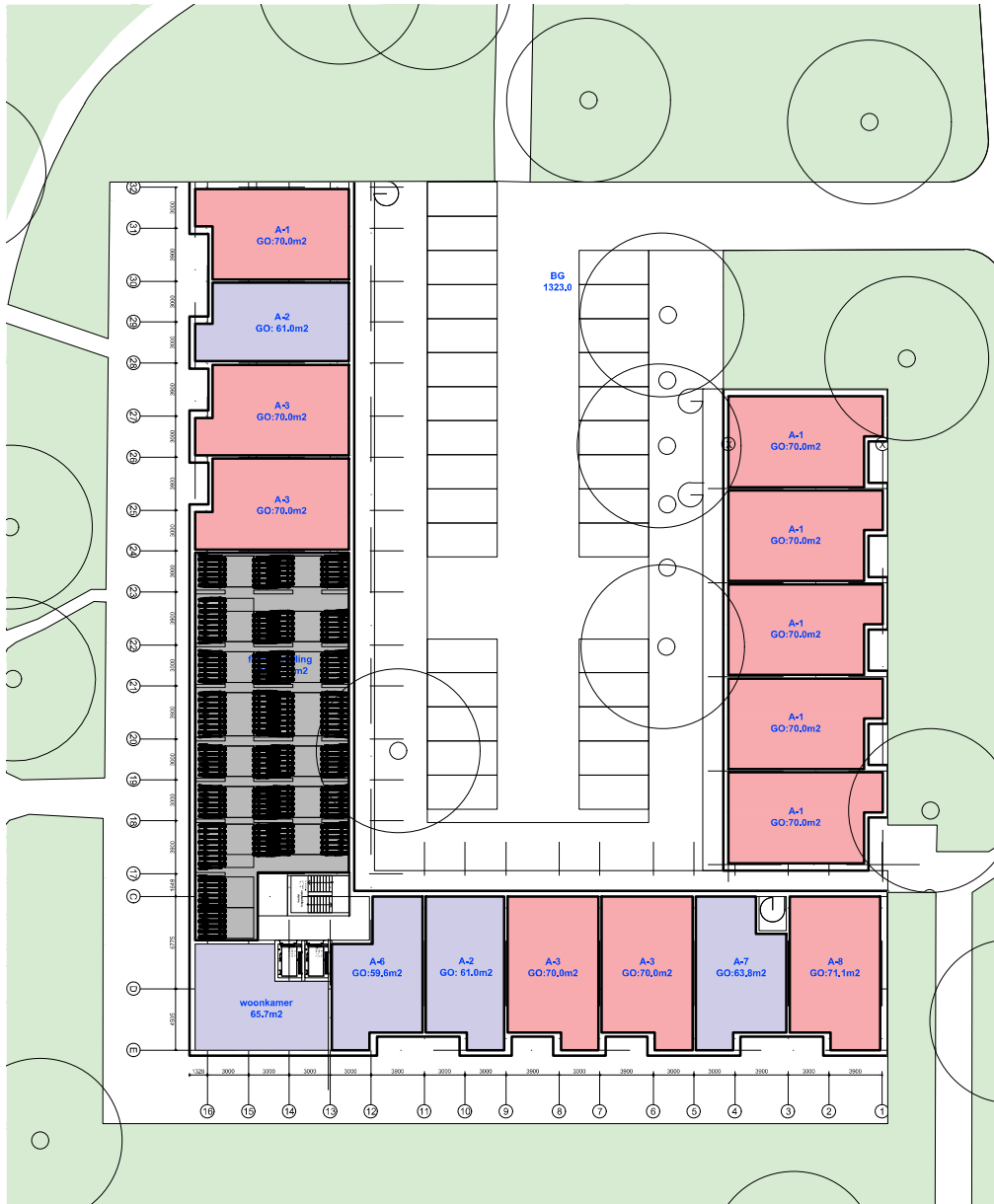
vorige model B



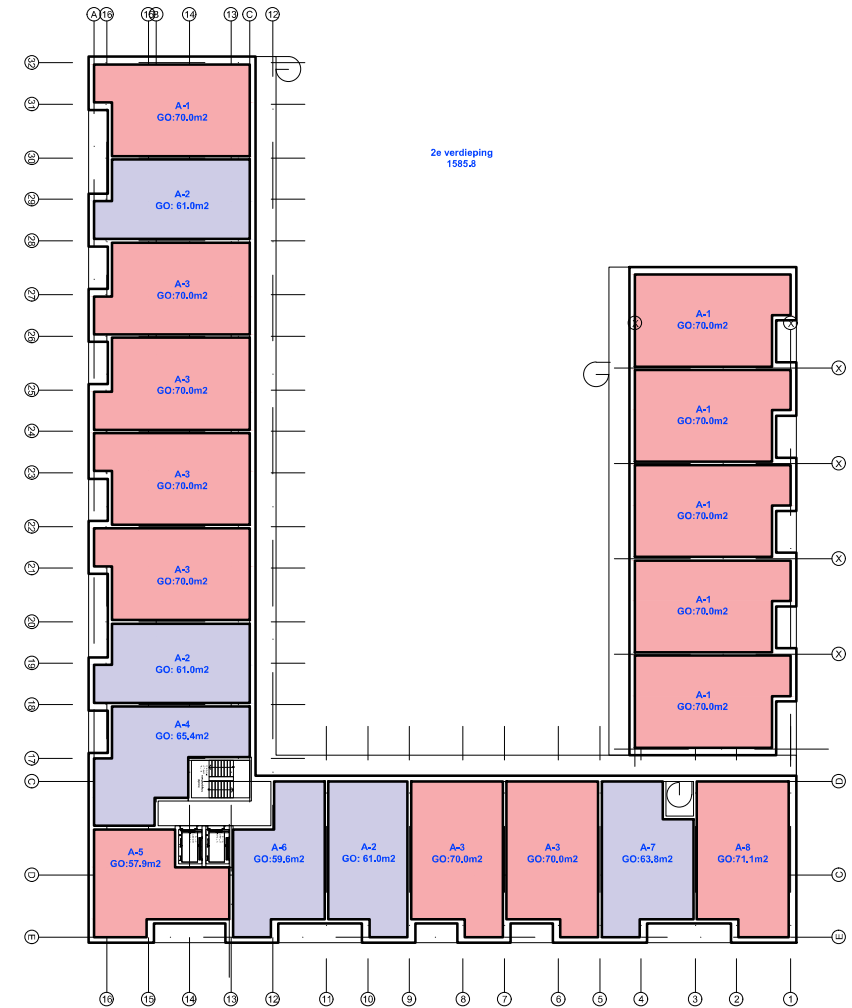
nieuw model

Model B

Plattegronden



Beganeground



Verdieping

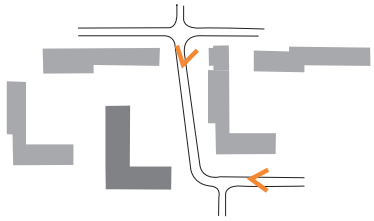
Model B

referentie gevel



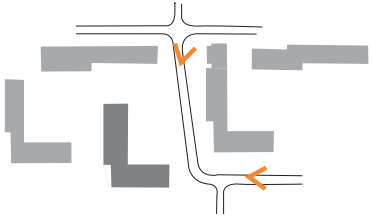
Model B

beeld vanaf straat



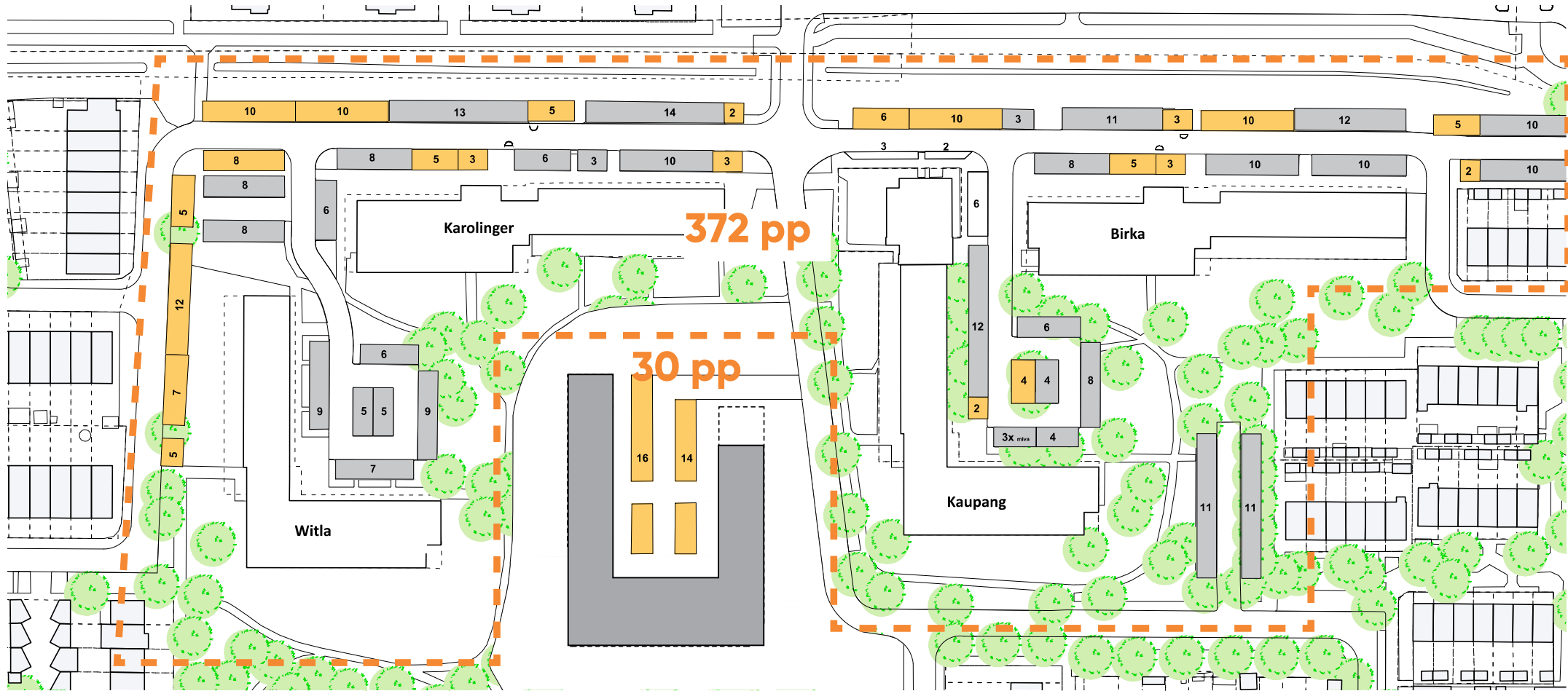
Model B

beeld vanaf straat



Model B

parkeren



| bestaand + 1,1 | nieuw + 1,2 | nieuw 1,5 | |
|-------------------|----------------|--------------|-------|
| 54 + | 10 + | 0 = | 64 |
| 53 + | 10 + | 0 = | 62 |
| 53 + | 10 + | 0 = | 62 |
| 54 + | 10 + | 0 = | 64 |
| 0 + | 120 + | 30 = | 150 + |
| | | | 402 |